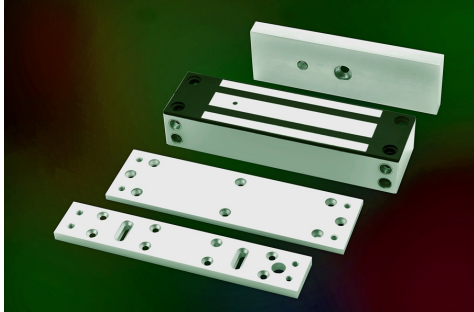




# EXT Series

## 1500lbs Water Proof Electromagnetic Lock

Model EXT675-SL (Monitored Version)



### Description

1500lbs Water Proof EM locks were designed as such to be unaffected / resisting the ingress of water under specified condition with its fully sealed electronics incased with stainless steel. Suitable for outdoor application and harsh climate.

### Standard Features



Fail Safe

Life Safety Applications



Zero Residual Magnetism

No Residual



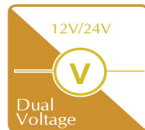
Low Power

Low Energy Consumption



Low Maintenance

Cost Savings



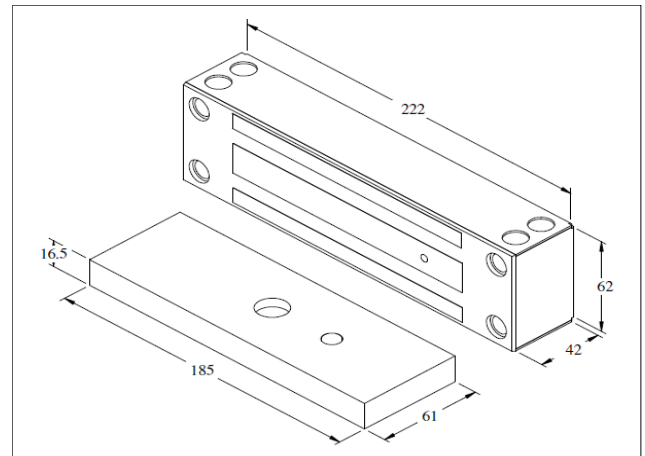
Dual Voltage

12/24V Selectable



Waterproof

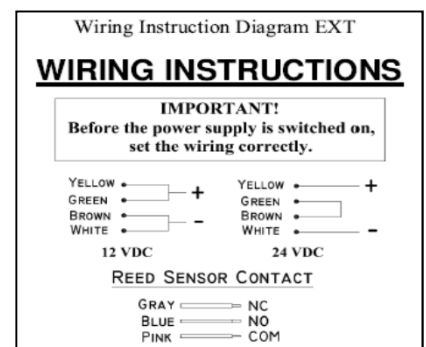
Fully Sealed Electronics



### Features & Technical Specification

Models	EXT675-SL
Features & Spec.	
Lock Status Monitoring	Reed Switch
Holding Force	Up to 1500lbs
Magnet Size	222 X 62 x 42 mm
Armature Size	185 X 61 X 16.5 mm
Current Drain	480mA±10%/12Vdc / 240mA±10%/24Vdc
Temperature	(-10 to 55) °C (14 to 131) °F
Housing	Stainless Steel Housing
Weight	5.4 Kg

### Wiring Diagram



**WARRANTY:-** Algatec EM Lock are warranted against defects in material and workmanship while used in normal service for a period of 5 years from the date of sale to the original customer.

**DISCLAIMER:-** Specifications are subject to change without prior notice.

- Attached photo is for reference purpose only, actual product may varies.

